

M54 to M6 Link Road
TR010054
Volume 2
2.5 General Arrangement Plans

Regulation 5(2)(o)

Planning Act 2008

Infrastructure Planning (Applications: Prescribed
Forms and Procedure) Regulations 2009

January 2020

Infrastructure Planning

Planning Act 2008

**The Infrastructure Planning
(Applications: Prescribed Forms and
Procedure) Regulations 2009**

**M54 to M6 Link Road
Development Consent Order 202[]**

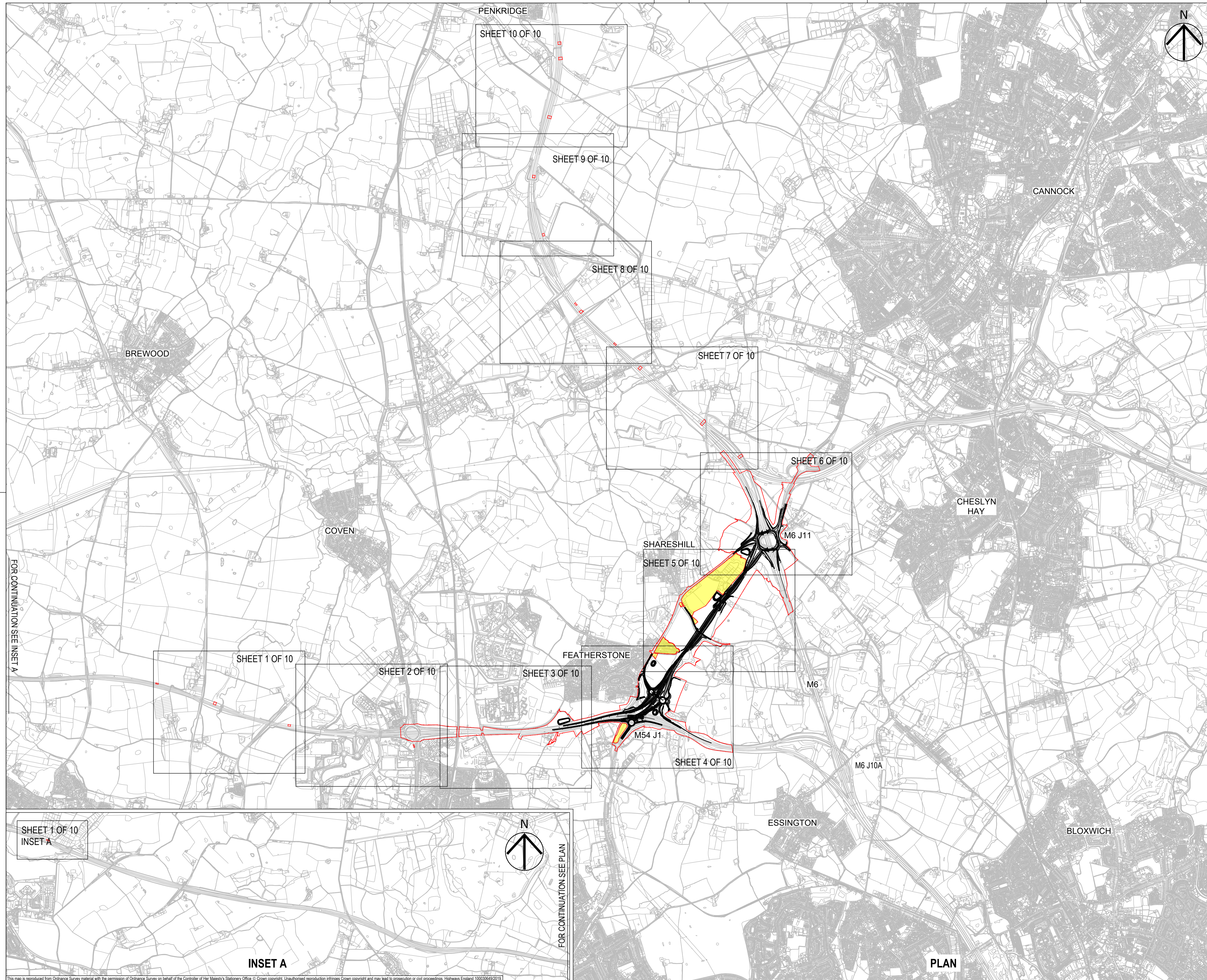
General Arrangement Plans

Regulation Number	Regulation 5(2)(o)
Planning Inspectorate Scheme Reference	TR010054
Application Document Reference	2.5
Author	M54 to M6 Link Road AECOM Project Team and Highways England

Version	Date	Status of Version
P01	January 2020	DCO Application

Schedule of Plans included in this Application Document

Drawing Number	Drawing Title	Revision
HE514465-ACM-HGN-M54_SW_PR_Z-DR-CH-1001	GENERAL ARRANGEMENT REGULATION 5(2)(O) KEY SHEET	P12
HE514465-ACM-HGN-Z1_SW_PR_Z-DR-CH-1001	GENERAL ARRANGEMENT REGULATION 5(2)(O) SHEET 1 OF 10	P08
HE514465-ACM-HGN-Z1_SW_PR_Z-DR-CH-1002	GENERAL ARRANGEMENT REGULATION 5(2)(O) SHEET 2 OF 10	P08
HE514465-ACM-HGN-Z1_SW_PR_Z-DR-CH-1003	GENERAL ARRANGEMENT REGULATION 5(2)(O) SHEET 3 OF 10	P08
HE514465-ACM-HGN-Z1_SW_PR_Z-DR-CH-1004	GENERAL ARRANGEMENT REGULATION 5(2)(O) SHEET 4 OF 10	P08
HE514465-ACM-HGN-Z1_SW_PR_Z-DR-CH-1005	GENERAL ARRANGEMENT REGULATION 5(2)(O) SHEET 5 OF 10	P08
HE514465-ACM-HGN-Z1_SW_PR_Z-DR-CH-1006	GENERAL ARRANGEMENT REGULATION 5(2)(O) SHEET 6 OF 10	P08
HE514465-ACM-HGN-Z1_SW_PR_Z-DR-CH-1007	GENERAL ARRANGEMENT REGULATION 5(2)(O) SHEET 7 OF 10	P08
HE514465-ACM-HGN-Z1_SW_PR_Z-DR-CH-1008	GENERAL ARRANGEMENT REGULATION 5(2)(O) SHEET 8 OF 10	P08
HE514465-ACM-HGN-Z1_SW_PR_Z-DR-CH-1009	GENERAL ARRANGEMENT REGULATION 5(2)(O) SHEET 9 OF 10	P08
HE514465-ACM-HGN-Z1_SW_PR_Z-DR-CH-1010	GENERAL ARRANGEMENT REGULATION 5(2)(O) SHEET 10 OF 10	P08



- NOTES**
1. THIS DRAWING IS TO BE READ IN CONJUNCTION WITH ALL OTHER RELEVANT DOCUMENTATION.
 2. DO NOT SCALE FROM THIS DRAWING, USE ONLY PRINTED DIMENSIONS.
 3. ALL DIMENSIONS IN MILLIMETRES, ALL CHAINAGES, LEVELS AND COORDINATES ARE IN METRES UNLESS DEFINED OTHERWISE.
 4. THIS DRAWING IS TO BE READ IN CONJUNCTION WITH THE PROJECT HEALTH & SAFETY FILE FOR ANY IDENTIFIED POTENTIAL RISKS.

— LIMITS OF LAND TO BE ACQUIRED OR USED PERMANENTLY OR TEMPORARILY (THE ORDER LIMITS)

■ LAND NOT INCLUDED WITHIN THE ORDER LIMITS

Revision Details	By	Date	Suffix
First Issue in Draft	AM	21/12/18	P01
Model P02 Release - Refer to Sheet 1-10 for Updates	AM	16/02/19	P02
Model P03 Release - Refer to Sheet 1-10 for Updates	EB	26/03/19	P03
Draft Order Limits Updated	AM	12/04/19	P04
Structure B04 Removed. Tower Farm Access Track Added.	MW	29/04/19	P05
Meshes converted to vector hatching for HE graphics	AM	09/05/19	P06
A460 Turning Head Added	AM	10/05/19	P07
Model P05 Release - Refer to sheet 1-10 for updates	MW	09/09/19	P08
Model P06 Release - Refer to sheet 1-10 for updates. Layout Updated.	AM	11/10/19	P09
RLB updated.	MW	30/10/19	P10
Boarder update and draft stamp removed	JP	20/12/19	P11
Minor amendments.	MW	22/01/20	P12

DCO APPLICATION

Client
Highways England
Floor 5
Two Colonnade Square
38 Colonnade Circus
Birmingham
B4 6BN

Development Consent Order Number
TR010054

Project Title
M54 to M6 Link Road

Development Consent Order Drawing Number
TR010054/APP/2.5

Drawing Title
**GENERAL ARRANGEMENT
REGULATION 5(2)(O)
KEY SHEET**

Designed	Drawn	Checked	Approved	Date
MW	MW	AM	RR	22/01/20
Internal Project No. 60536736	Suitability S8			
Scale @ A1 1:200000H/1:200000V	Zone Highways General			
THIS DOCUMENT HAS BEEN PREPARED PURSUANT TO AND SUBJECT TO THE TERMS OF AECOM'S APPOINTMENT BY ITS CLIENT. AECOM ACCEPTS NO LIABILITY FOR ANY USE OF THIS DOCUMENT OTHER THAN BY ITS ORIGINAL CLIENT OR FOLLOWING AECOM'S EXPRESS AGREEMENT TO SUCH USE, AND ONLY FOR THE PURPOSES FOR WHICH IT WAS PREPARED AND PROVIDED.				
Drawing Number Highways England PIN HE514465 -ACM	I Originator -HGN-	I Volume -DR-CH-1001	Rev P12	
M54_SW_PR_Z		Location I Type I Role I Number		

FOR CONTINUATION SEE INSET A

SHEET 1 OF 10
INSET A

INSET A

FOR CONTINUATION SEE PLAN

PLAN

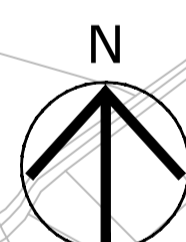
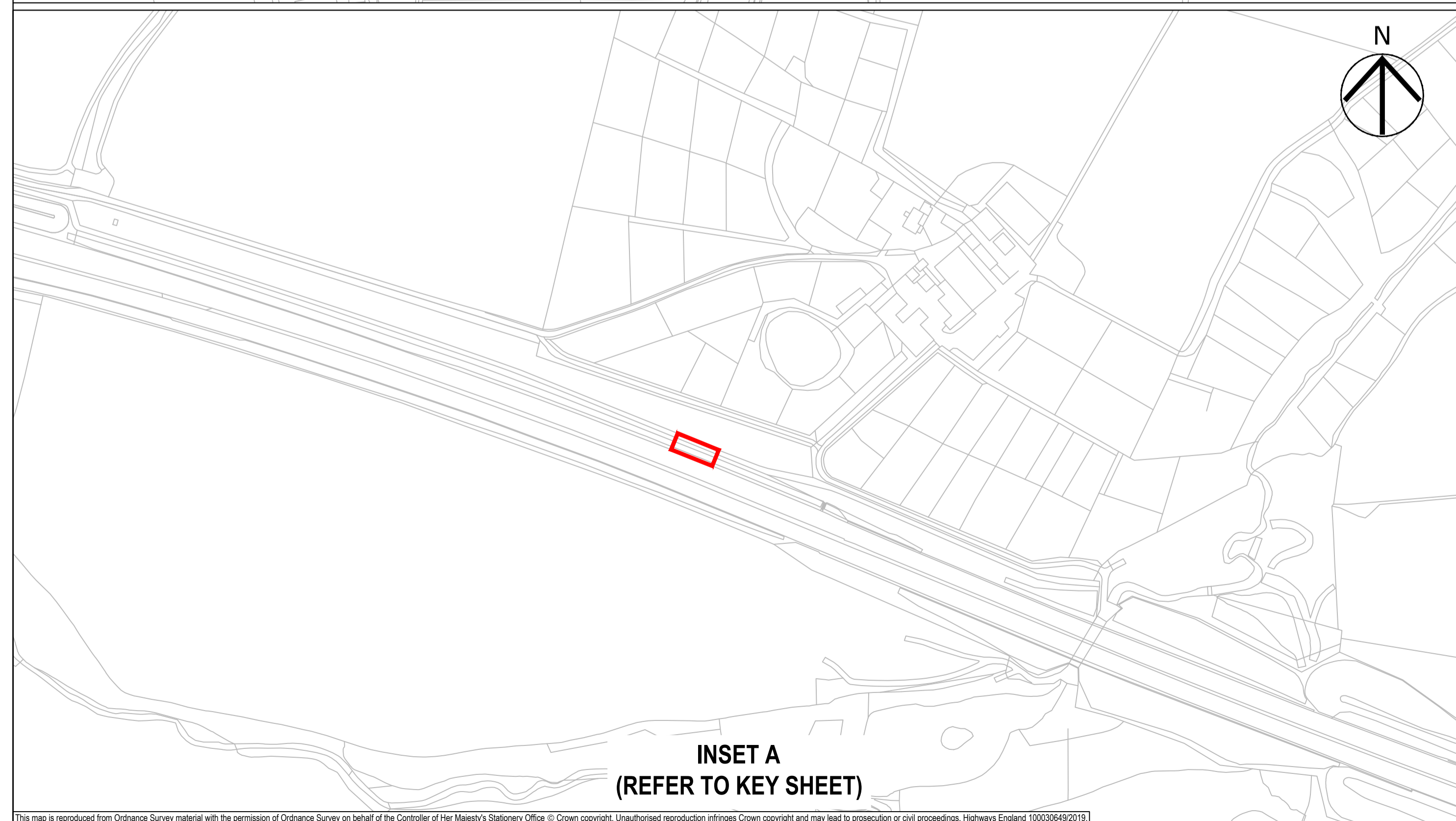
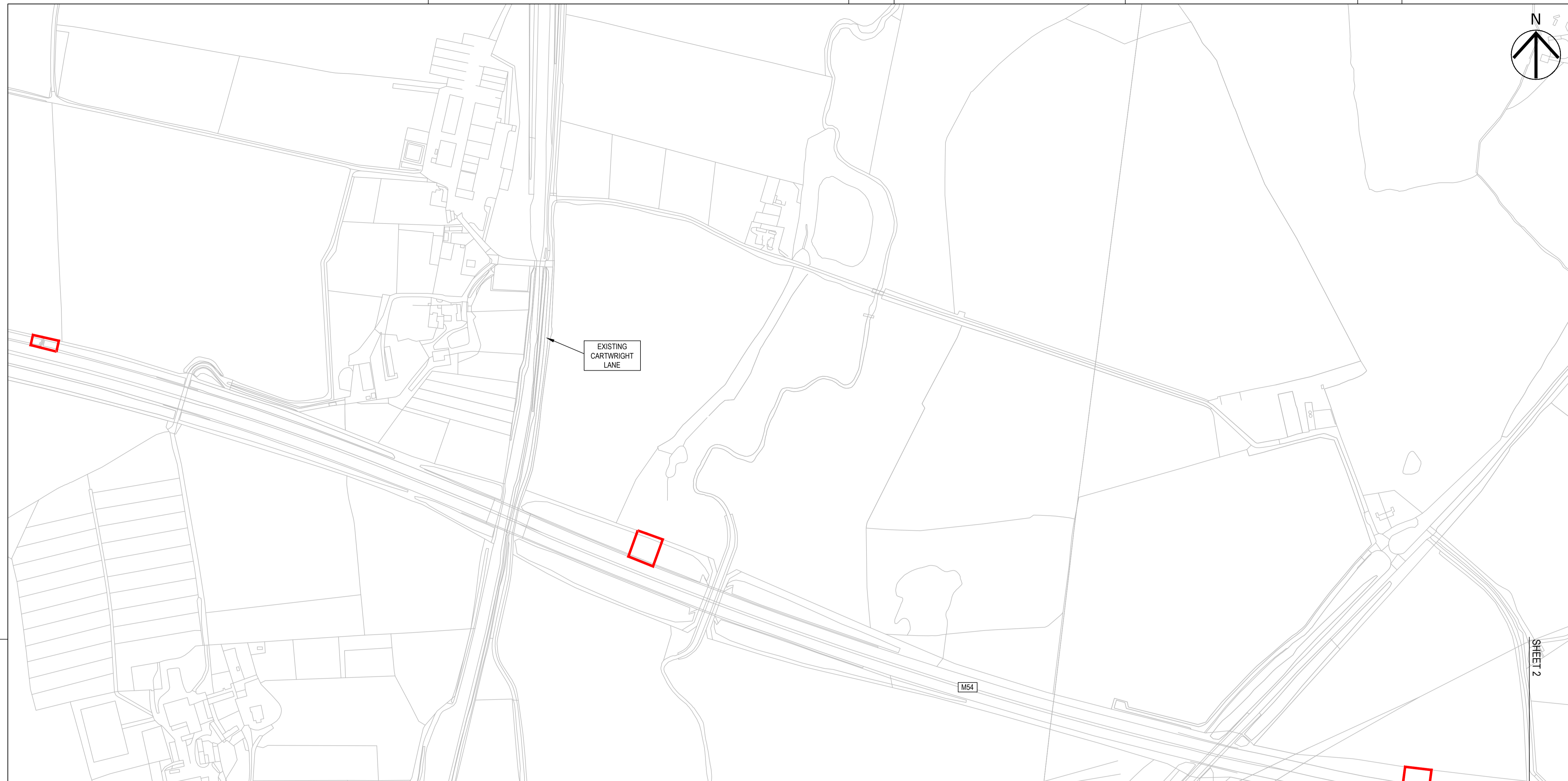


NOTES

1. THIS DRAWING IS TO BE READ IN CONJUNCTION WITH ALL OTHER RELEVANT DOCUMENTATION.
2. DO NOT SCALE FROM THIS DRAWING, USE ONLY PRINTED DIMENSIONS.
3. ALL DIMENSIONS IN MILLIMETRES. ALL CHAINAGES, LEVELS AND COORDINATES ARE IN METRES UNLESS DEFINED OTHERWISE.
4. THIS DRAWING IS TO BE READ IN CONJUNCTION WITH THE PROJECT HEALTH & SAFETY FILE FOR ANY IDENTIFIED POTENTIAL RISKS.

KEY

- LIMITS OF LAND TO BE ACQUIRED OR USED PERMANENTLY OR TEMPORARILY (THE ORDER LIMITS)
- LAND NOT INCLUDED WITHIN THE ORDER LIMITS
- RETAINING WALLS
- NON-MOTORISED USER ROUTE (PLEASE REFER TO STREETS, RIGHTS OF WAY AND ACCESS PLANS [TR010054/APP2.7] FOR MORE INFORMATION)



SHEET 2

SHEET 1

Purpose of issue	By	Date	Suffix
First Issue in Draft	MW	21/12/18	P01
No significant changes noted from previous revision	JD	22/02/19	P02
No significant changes noted from previous revision	MW	29/03/19	P03
No significant changes noted from previous revision	JP	14/05/19	P04
No significant changes noted from previous revision	MW	15/08/19	P05
Refer to Design Change Tracker for details	JP	30/10/19	P06
Background colour added	JP	17/12/19	P07
Minor amendments.	MW	21/01/20	P08

DCO APPLICATION

Client
Highways England
Floor 5
Two Colonn Square
38 Colonnore Circus
Birmingham
B4 6BN



Development Consent Order Number
TR010054

Project Title
M54 to M6 Link Road

Development Consent Order Drawing Number
TR010054/APP/2.5

Drawing Title
**GENERAL ARRANGEMENT
REGULATION 5(2)(O)
SHEET 1 OF 10**

Designed	Drawn	Checked	Approved	Date
---	MW	AM	RR	21/01/20

Internal Project No.
60536736

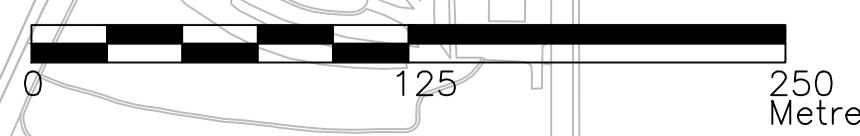
Scale @ A1
1:2500H/1:2500V

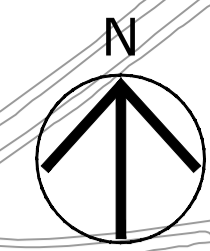
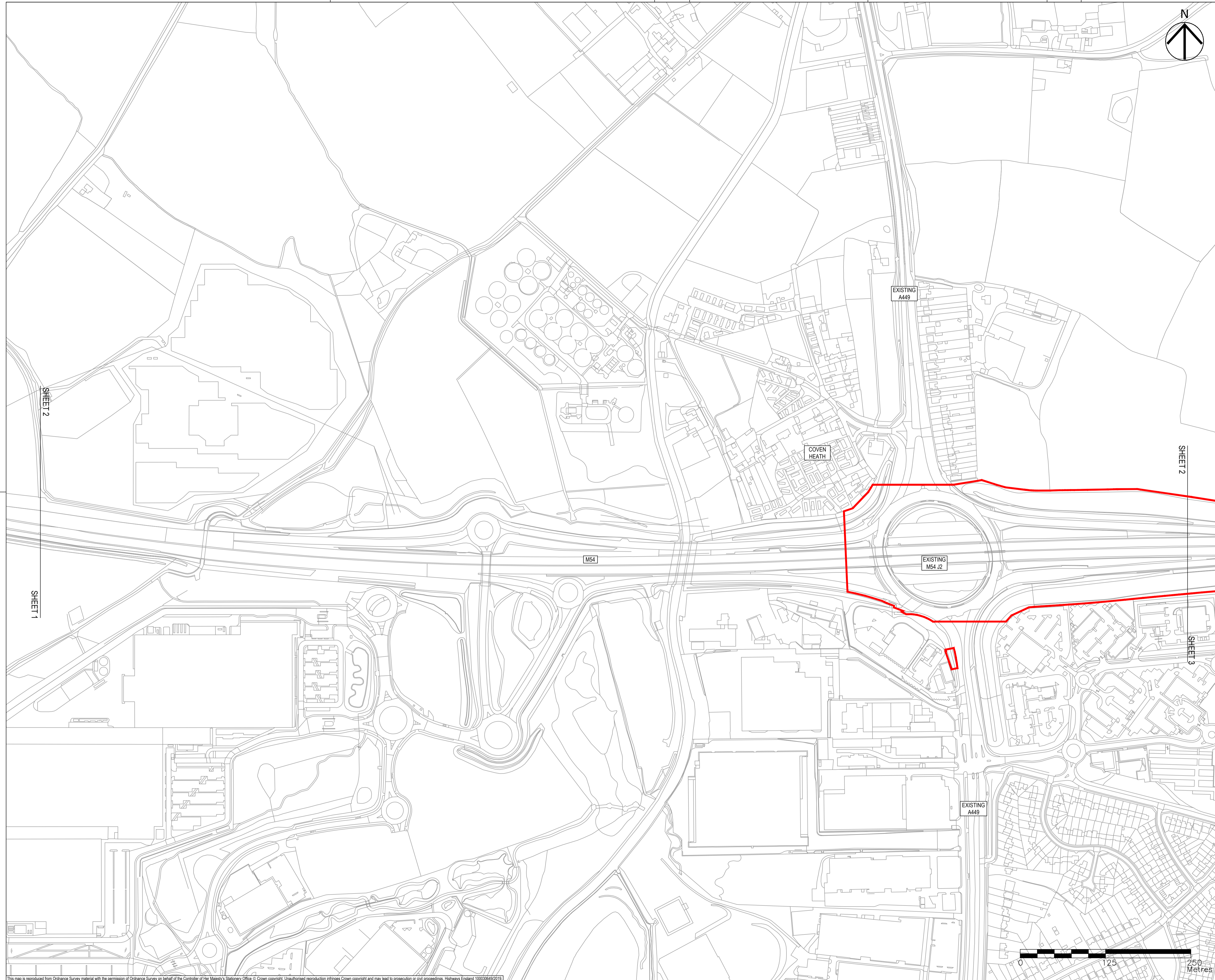
Suitability
S8

Zone
Highways General

THIS DOCUMENT HAS BEEN PREPARED PURSUANT TO AND SUBJECT TO THE TERMS OF AECOM'S APPOINTMENT BY ITS CLIENT. AECOM ACCEPTS NO LIABILITY FOR ANY USE OF THIS DOCUMENT OTHER THAN BY ITS ORIGINAL CLIENT OR FOLLOWING AECOM'S EXPRESS AGREEMENT TO SUCH USE, AND ONLY FOR THE PURPOSES FOR WHICH IT WAS PREPARED AND PROVIDED.

Drawing Number	Highways England PIN	I Originator	I Volume	Rev
HE514465	-ACM	-HGN-	-DR-CH-1001	P08
Z1_SW_PR_Z				





- NOTES**
- THIS DRAWING IS TO BE READ IN CONJUNCTION WITH ALL OTHER RELEVANT DOCUMENTATION.
 - DO NOT SCALE FROM THIS DRAWING, USE ONLY PRINTED DIMENSIONS.
 - ALL DIMENSIONS IN MILLIMETRES. ALL CHAINAGES, LEVELS AND COORDINATES ARE IN METRES UNLESS DEFINED OTHERWISE.
 - THIS DRAWING IS TO BE READ IN CONJUNCTION WITH THE PROJECT HEALTH & SAFETY FILE FOR ANY IDENTIFIED POTENTIAL RISKS.

- KEY**
- LIMITS OF LAND TO BE ACQUIRED OR USED PERMANENTLY OR TEMPORARILY (THE ORDER LIMITS)
 - LAND NOT INCLUDED WITHIN THE ORDER LIMITS
 - RETAINING WALLS
 - NON-MOTORISED USER ROUTE (PLEASE REFER TO STREETS, RIGHTS OF WAY AND ACCESS PLANS [TR010054/APP/2.7] FOR MORE INFORMATION)

First Issue in Draft	MW	AM	21/12/18	P01
See Revision Notes for further details.	JD	AM	22/02/19	P02
No significant changes noted from previous revision	MW	AM	29/03/19	P03
No significant changes noted from previous revision	JP	AM	14/05/19	P04
Refer to Design Change Tracker for details	HS	AM	15/08/19	P05
Refer to Design Change Tracker for details	JP	DYT	30/10/19	P06
Background colour added	JP	RR	17/12/19	P07
Minor amendments.	MW	DL	21/01/20	P08
	RR			
Revision Details	By	Date	Check	Suffix

DCO APPLICATION

Client
Highways England
Floor 5
Two Colonnade Square
38 Colonnade Circus
Birmingham
B4 6BN



Development Consent Order Number
TR010054

Project Title
M54 to M6 Link Road

Development Consent Order Drawing Number
TR010054/APP/2.5

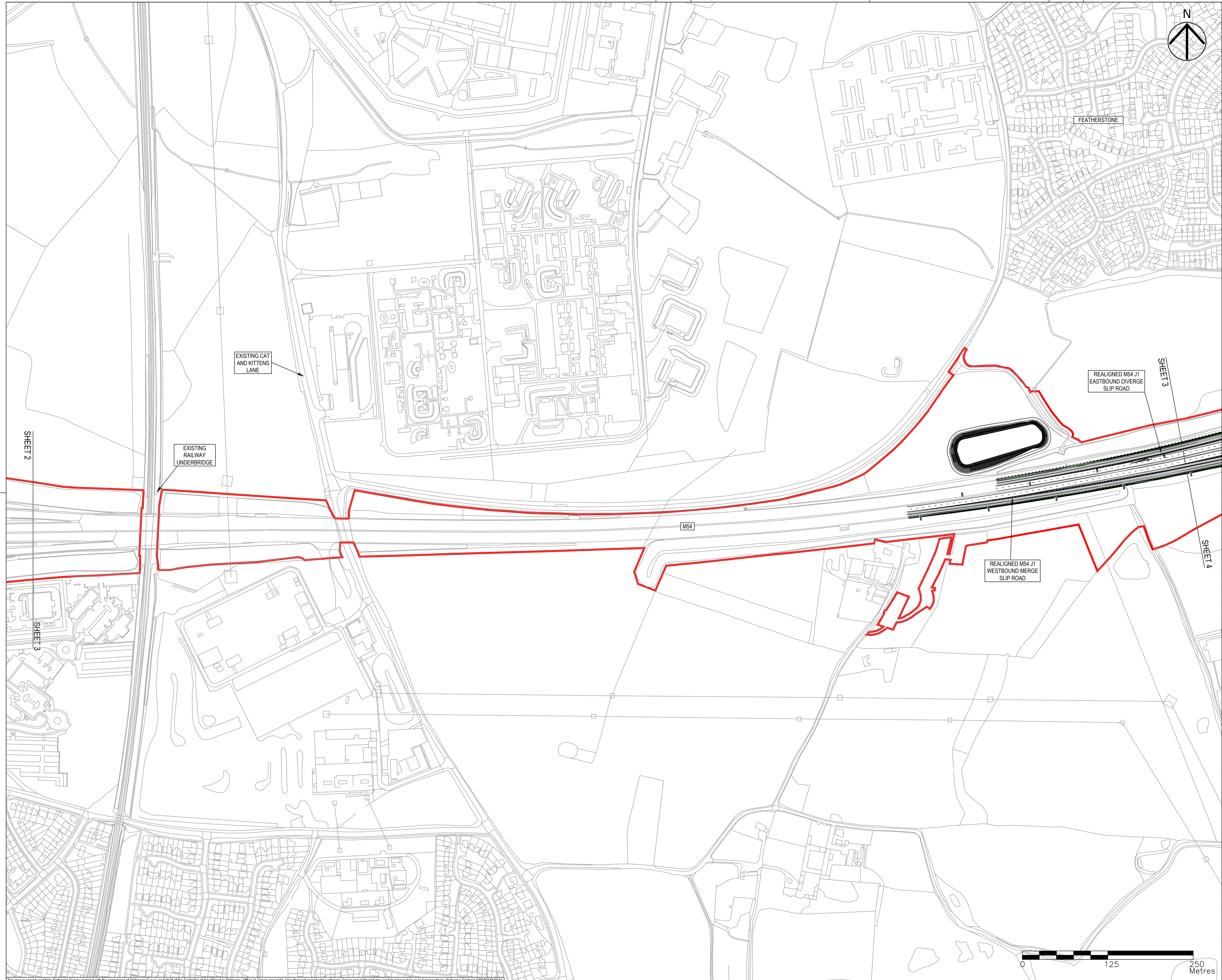
Drawing Title
**GENERAL ARRANGEMENT
REGULATION 5(2)(O)
SHEET 2 OF 10**

Designed	Drawn	Checked	Approved	Date
---	MW	AM	RR	21/01/20
Internal Project No. 60536736	Suitability S8		Zone Highways General	
Scale @ A1 1:2500H/1:2500V				

THIS DOCUMENT HAS BEEN PREPARED PURSUANT TO AND SUBJECT TO THE TERMS OF AECOM'S APPOINTMENT BY ITS CLIENT. AECOM ACCEPTS NO LIABILITY FOR ANY USE OF THIS DOCUMENT OTHER THAN BY ITS ORIGINAL CLIENT OR FOLLOWING AECOM'S EXPRESS AGREEMENT TO SUCH USE, AND ONLY FOR THE PURPOSES FOR WHICH IT WAS PREPARED AND PROVIDED.

Drawing Number HE514465 -ACM	I Originator -HGN-	I Volume -DR-CH-1002	Rev P08
Location Z1_SW_PR_Z	I Type I Role	I Number	





- NOTES**
- THIS DRAWING IS TO BE READ IN CONJUNCTION WITH ALL OTHER RELEVANT DOCUMENTATION.
 - DO NOT SCALE FROM THIS DRAWING, USE ONLY PRINTED DIMENSIONS.
 - ALL DIMENSIONS IN MILLIMETRES. ALL CHAINAGES, LEVELS AND COORDINATES ARE IN METRES UNLESS DEFINED OTHERWISE.
 - THIS DRAWING IS TO BE READ IN CONJUNCTION WITH THE PROJECT HEALTH & SAFETY FILE FOR ANY IDENTIFIED POTENTIAL RISKS.
- KEY**
- LIMITS OF LAND TO BE ACQUIRED OR USED PERMANENTLY OR TEMPORARILY (THE ORDER LIMITS)
 - LAND NOT INCLUDED WITHIN THE ORDER LIMITS
 - RETAINING WALLS
 - NON-MOTORIZED USER ROUTE (PLEASE REFER TO STREETS, RIGHTS OF WAY AND ACCESS PLANS [TR010054/APP.2.7] FOR MORE INFORMATION)

Revision Details	By	Date	Suffix
First Issue in Draft	MW	21/12/18	P01
See Revision Notes for further details.	JD	22/02/19	P02
See Revision Notes for further details.	MW	29/03/19	P03
A460 Turning Head Added. Road Markings and Hatching Added.	AM	10/05/19	P04
Refer to Design Change Tracker for details	HS	15/08/19	P05
Refer to Design Change Tracker for details	JP	30/10/19	P06
Background colour added	JP	17/12/19	P07
Minor amendments.	MW	21/01/20	P08

DCO APPLICATION

Client
 Highways England
 Floor 5
 Two Colonnade Square
 38 Colonnade Circus
 Birmingham
 B4 6BN



Development Consent Order Number
TR010054

Project Title
M54 to M6 Link Road

Development Consent Order Drawing Number
TR010054/APP.2.5

Drawing Title
**GENERAL ARRANGEMENT
 REGULATION 5(2)(O)
 SHEET 3 OF 10**

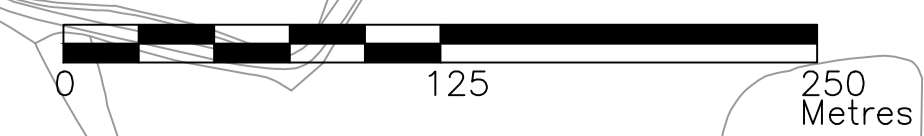
Designed	Drawn	Checked	Approved	Date
---	MW	AM	RR	21/01/20

Internal Project No. 60536736
 Suitability S8
 Scale @ A1 1:2500H/1:2500V
 Zone Highways General

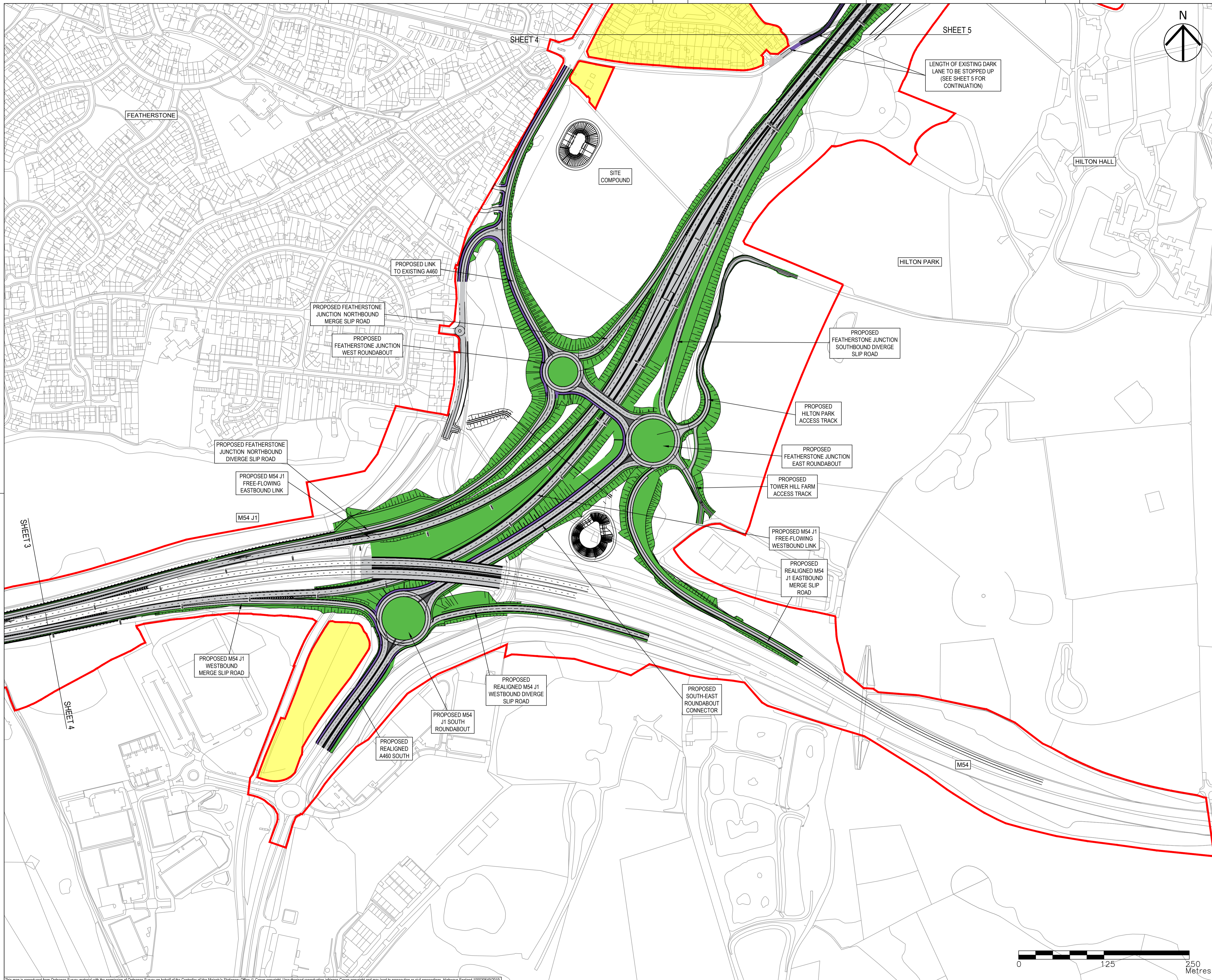
THIS DOCUMENT HAS BEEN PREPARED PURSUANT TO AND SUBJECT TO THE TERMS OF AECOM'S APPOINTMENT BY ITS CLIENT. AECOM ACCEPTS NO LIABILITY FOR ANY USE OF THIS DOCUMENT OTHER THAN BY ITS ORIGINAL CLIENT OR FOLLOWING AECOM'S EXPRESS AGREEMENT TO SUCH USE, AND ONLY FOR THE PURPOSES FOR WHICH IT WAS PREPARED AND PROVIDED.

Drawing Number	Highways England PIN	I Originator	I Volume	Rev
HE514465	-ACM	-HGN-		P08
Z1_SW_PR_Z		-DR-CH-1003		

Location I Type I Role I Number



This map is reproduced from Ordnance Survey material with the permission of Ordnance Survey on behalf of the Controller of Her Majesty's Stationery Office. © Crown copyright. Unauthorised reproduction infringes Crown copyright and may lead to prosecution or civil proceedings. Highways England 100030549/2019



- NOTES**
- THIS DRAWING IS TO BE READ IN CONJUNCTION WITH ALL OTHER RELEVANT DOCUMENTATION.
 - DO NOT SCALE FROM THIS DRAWING. USE ONLY PRINTED DIMENSIONS.
 - ALL DIMENSIONS IN MILLIMETRES. ALL CHAINAGES, LEVELS AND COORDINATES ARE IN METRES UNLESS DEFINED OTHERWISE.
 - THIS DRAWING IS TO BE READ IN CONJUNCTION WITH THE PROJECT HEALTH & SAFETY FILE FOR ANY IDENTIFIED POTENTIAL RISKS.
- KEY**
- LIMITS OF LAND TO BE ACQUIRED OR USED PERMANENTLY OR TEMPORARILY (THE ORDER LIMITS)
 - LAND NOT INCLUDED WITHIN THE ORDER LIMITS
 - RETAINING WALLS
 - NON-MOTORISED USER ROUTE (PLEASE REFER TO STREETS, RIGHTS OF WAY AND ACCESS PLANS [TR010054/APP/2.7] FOR MORE INFORMATION)

First Issue in Draft	MW	AM	21/12/18	P01
See Revision Notes for further details	JD	AM	22/02/19	P02
No significant changes noted from previous revision	MW	AM	29/03/19	P03
No significant changes noted from previous revision	JP	AM	14/05/19	P04
No significant changes noted from previous revision	HS	AM	15/08/19	P05
Refer to Design Change Tracker for details	JP	RR	30/10/19	P06
Background colour added	JP	DL	17/12/19	P07
Minor amendments	MW	RR	21/01/20	P08
Revision Details	By	Check	Date	Suffix

DCO APPLICATION

Client
 Highways England
 Floor 5
 25 Colmore Square
 38 Colmore Circus
 Birmingham
 B4 6BN

Development Consent Order Number
TR010054

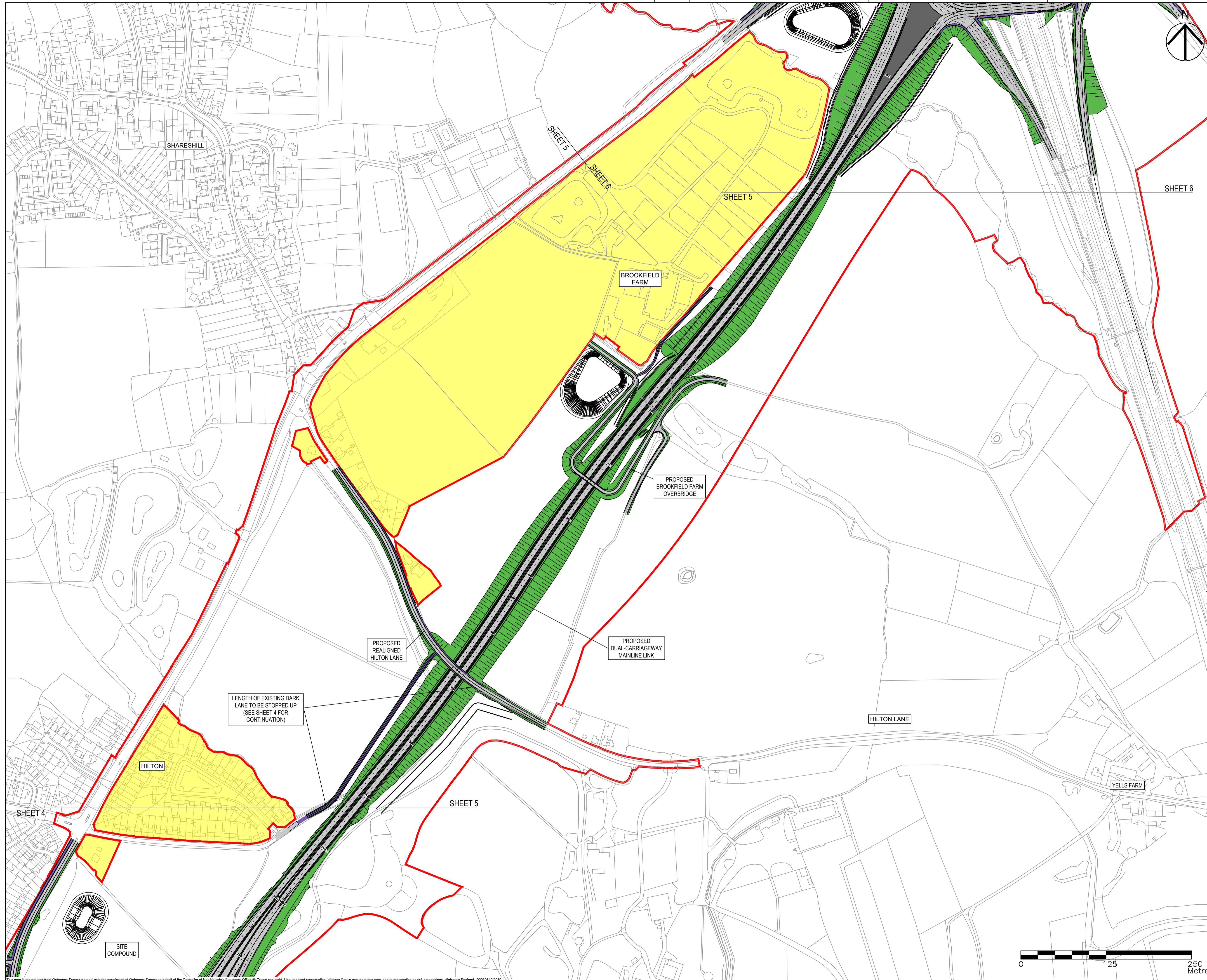
Project Title
M54 to M6 Link Road

Development Consent Order Drawing Number
TR010054/APP/2.5

Drawing Title
**GENERAL ARRANGEMENT
 REGULATION 5(2)(O)
 SHEET 4 OF 10**

Designed	Drawn	Checked	Approved	Date
---	MW	AM	RR	21/01/20
Internal Project No. 60536736	Suitability S8			
Scale @ A1 1:2500H/1:2500V	Zone Highways General			
THIS DOCUMENT HAS BEEN PREPARED PURSUANT TO AND SUBJECT TO THE TERMS OF AECOM'S APPOINTMENT BY ITS CLIENT. AECOM ACCEPTS NO LIABILITY FOR ANY USE OF THIS DOCUMENT OTHER THAN BY ITS ORIGINAL CLIENT OR FOLLOWING AECOM'S EXPRESS AGREEMENT TO SUCH USE, AND ONLY FOR THE PURPOSES FOR WHICH IT WAS PREPARED AND PROVIDED.				
Drawing Number HE514465	Drawn -ACM	Checked -HGN	Approved -DR-CH-1004	Rev P08
Location Z1_SW_PR_Z	I Type I Role I Number			

This map is reproduced from Ordnance Survey material with the permission of Ordnance Survey on behalf of the Controller of Her Majesty's Stationery Office © Crown copyright. Unauthorised reproduction infringes Crown copyright and may lead to prosecution or civil proceedings. Highways England 100030549(2019)



- NOTES**
1. THIS DRAWING IS TO BE READ IN CONJUNCTION WITH ALL OTHER RELEVANT DOCUMENTATION.
 2. DO NOT SCALE FROM THIS DRAWING. USE ONLY PRINTED DIMENSIONS.
 3. ALL DIMENSIONS IN MILLIMETRES. ALL CHAINAGES, LEVELS AND COORDINATES ARE IN METRES UNLESS DEFINED OTHERWISE.
 4. THIS DRAWING IS TO BE READ IN CONJUNCTION WITH THE PROJECT HEALTH & SAFETY FILE FOR ANY IDENTIFIED POTENTIAL RISKS.
- KEY**
- LIMITS OF LAND TO BE ACQUIRED OR USED PERMANENTLY OR TEMPORARILY (THE ORDER LIMITS)
 - LAND NOT INCLUDED WITHIN THE ORDER LIMITS
 - ~ RETAINING WALLS
 - NON-MOTORISED USER ROUTE (PLEASE REFER TO STREETS, RIGHTS OF WAY AND ACCESS PLANS [TR010054/APP/2.7] FOR MORE INFORMATION)

Revision Details	By	Check	Date	Suffix
First Issue in Draft	MW	AM	21/12/18	P01
No significant changes noted from previous revision	JD	AM	22/02/19	P02
See Revision Notes for further details.	MW	AM	29/03/19	P03
Tower Farm Acc Bridge Removed	AM	AM	10/05/19	P04
Refer to Design Change Tracker for details	HS	DYT	15/08/19	P05
Refer to Design Change Tracker for details	JP	RR	30/10/19	P06
Background colour added	JP	DL	17/12/19	P07
Minor amendments.	MW	RR	21/01/20	P08

DCO APPLICATION

Client
 Highways England
 Floor 5
 25 Colmore Square
 25 Colmore Circus
 Birmingham
 B4 6BN

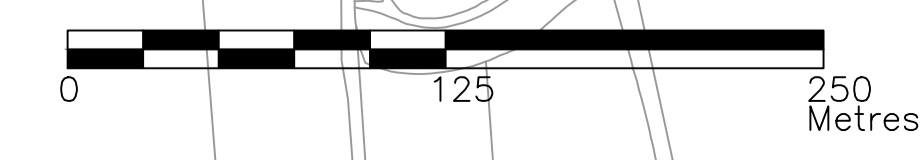
Development Consent Order Number
TR010054

Project Title
M54 to M6 Link Road

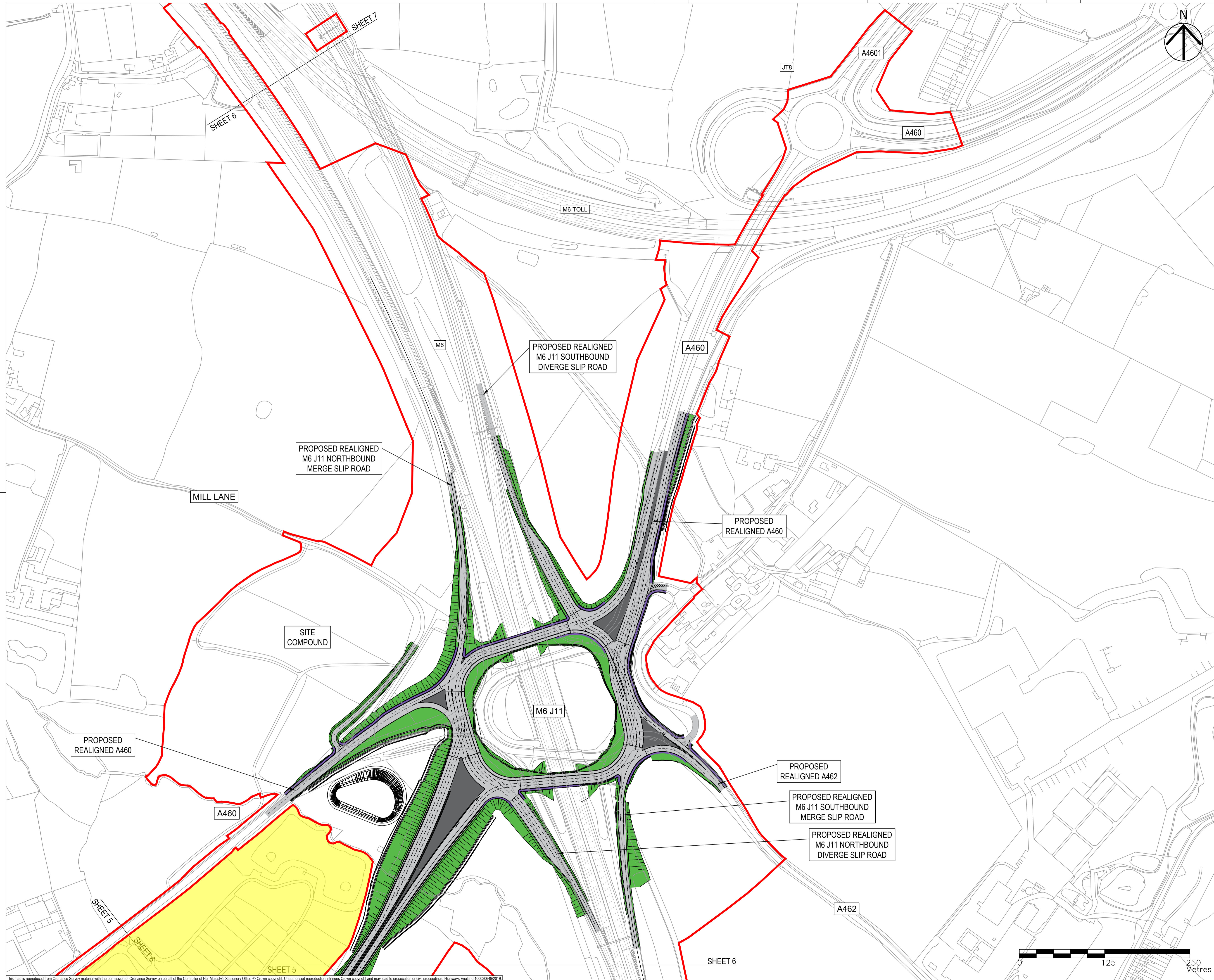
Development Consent Order Drawing Number
TR010054/APP/2.5

Drawing Title
**GENERAL ARRANGEMENT
 REGULATION 5(2)(O)
 SHEET 5 OF 10**

Designed	Drawn	Checked	Approved	Date
---	MW	AM	RR	21/01/20
Internal Project No. 60536736	Suitability S8			
Scale @ A1 1:2500H/1:2500V	Zone Highways General			
<small>THIS DOCUMENT HAS BEEN PREPARED PURSUANT TO AND SUBJECT TO THE TERMS OF AECOM'S APPOINTMENT BY ITS CLIENT. AECOM ACCEPTS NO LIABILITY FOR ANY USE OF THIS DOCUMENT OTHER THAN BY ITS ORIGINAL CLIENT OR FOLLOWING AECOM'S EXPRESS AGREEMENT TO SUCH USE, AND ONLY FOR THE PURPOSES FOR WHICH IT WAS PREPARED AND PROVIDED.</small>				
Drawing Number HE514465	Originator -ACM	I Volume -HGN-	Rev P08	
Location Z2_SW_PR_Z	I Type -DR-	I Role CH-1005	I Number	



This map is reproduced from Ordnance Survey material with the permission of Ordnance Survey on behalf of the Controller of Her Majesty's Stationery Office © Crown copyright. Unauthorised reproduction infringes Crown copyright and may lead to prosecution or civil proceedings. Highways England 100030649(2019)



- NOTES**
1. THIS DRAWING IS TO BE READ IN CONJUNCTION WITH ALL OTHER RELEVANT DOCUMENTATION.
 2. DO NOT SCALE FROM THIS DRAWING, USE ONLY PRINTED DIMENSIONS.
 3. ALL DIMENSIONS IN MILLIMETRES. ALL CHAINAGES, LEVELS AND COORDINATES ARE IN METRES UNLESS DEFINED OTHERWISE.
 4. THIS DRAWING IS TO BE READ IN CONJUNCTION WITH THE PROJECT HEALTH & SAFETY FILE FOR ANY IDENTIFIED POTENTIAL RISKS.

- KEY**
- LIMITS OF LAND TO BE ACQUIRED OR USED PERMANENTLY OR TEMPORARILY (THE ORDER LIMITS)
 - LAND NOT INCLUDED WITHIN THE ORDER LIMITS
 - RETAINING WALLS
 - NON-MOTORIZED USER ROUTE (PLEASE REFER TO STREETS, RIGHTS OF WAY AND ACCESS PLANS [TR010054/APP2.7] FOR MORE INFORMATION)

Revision Details	By	Date	Suffix
First Issue in Draft	MW	21/12/18	P01
See Revision Notes for further details	JD	22/02/19	P02
See Revision Notes for further details	MW	29/03/19	P03
See Revision Notes for further details	JP	14/05/19	P04
Refer to Design Change Tracker for details	HS	15/08/19	P05
Refer to Design Change Tracker for details	JP	30/10/19	P06
Background colour added	JP	17/12/19	P07
Minor amendments.	MW	21/01/20	P08

DCO APPLICATION

Client
Highways England
Floor 5
Two Colonnade Square
38 Colonnade Circus
Birmingham
B4 6BN



Development Consent Order Number
TR010054

Project Title
M54 to M6 Link Road

Development Consent Order Drawing Number
TR010054/APP/2.5

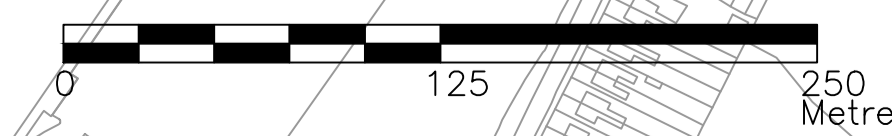
Drawing Title
GENERAL ARRANGEMENT REGULATION 5(2)(O) SHEET 6 OF 10

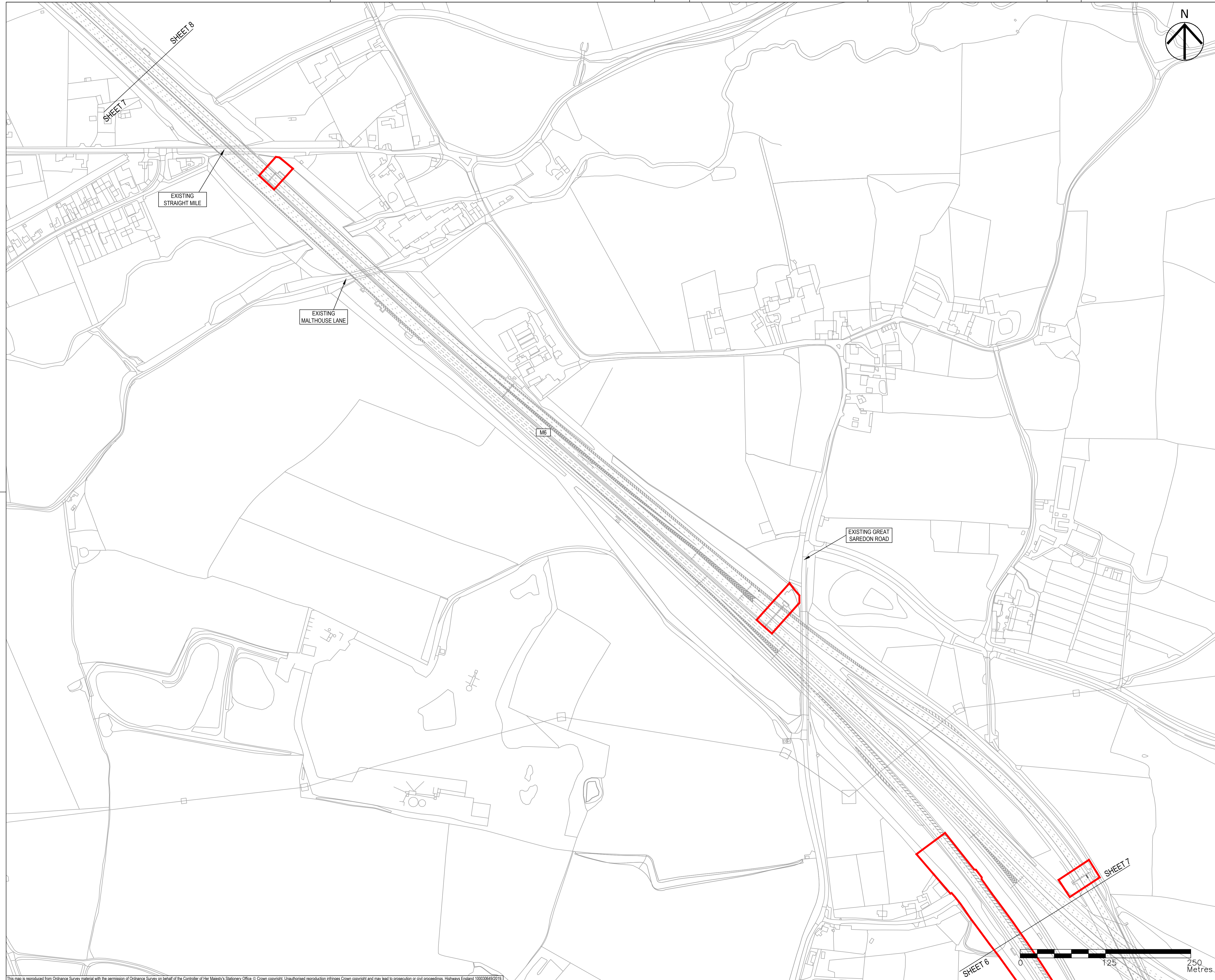
Designed	Drawn	Checked	Approved	Date
---	MW	AM	RR	21/01/20

Internal Project No. 60536736
Scale @ A1 1:2500H/1:2500V
Suitability S8
Zone Highways General

THIS DOCUMENT HAS BEEN PREPARED PURSUANT TO AND SUBJECT TO THE TERMS OF AECOM'S APPOINTMENT BY ITS CLIENT. AECOM ACCEPTS NO LIABILITY FOR ANY USE OF THIS DOCUMENT OTHER THAN BY ITS ORIGINAL CLIENT OR FOLLOWING AECOM'S EXPRESS AGREEMENT TO SUCH USE, AND ONLY FOR THE PURPOSES FOR WHICH IT WAS PREPARED AND PROVIDED.

Drawing Number	Originator	Volume	Rev
HE514465 -ACM	-HGN-		P08
Z3_SW_PR_Z	-DR-CH-1006		





- NOTES**
1. THIS DRAWING IS TO BE READ IN CONJUNCTION WITH ALL OTHER RELEVANT DOCUMENTATION.
 2. DO NOT SCALE FROM THIS DRAWING, USE ONLY PRINTED DIMENSIONS.
 3. ALL DIMENSIONS IN MILLIMETRES. ALL CHAINAGES, LEVELS AND COORDINATES ARE IN METRES UNLESS DEFINED OTHERWISE.
 4. THIS DRAWING IS TO BE READ IN CONJUNCTION WITH THE PROJECT HEALTH & SAFETY FILE FOR ANY IDENTIFIED POTENTIAL RISKS.

- KEY**
- LIMITS OF LAND TO BE ACQUIRED OR USED PERMANENTLY OR TEMPORARILY (THE ORDER LIMITS)
 - LAND NOT INCLUDED WITHIN THE ORDER LIMITS
 - RETAINING WALLS
 - NON-MOTORIZED USER ROUTE (PLEASE REFER TO STREETS, RIGHTS OF WAY AND ACCESS PLANS [TR010054/APP2.7] FOR MORE INFORMATION)

Revision Details	By	Date	Suffix
First Issue in Draft	MW	21/12/18	P01
See Revision Notes for further details	JD	22/02/19	P02
See Revision Notes for further details	MW	29/03/19	P03
Road Markings and Hatching Added.	AM	10/05/19	P04
Refer to Design Change Tracker for details	HS	15/08/19	P05
Refer to Design Change Tracker for details	JP	30/10/19	P06
Background colour added	JP	17/12/19	P07
Minor amendments.	MW	21/01/20	P08

DCO APPLICATION

Client
Highways England
 Floor 5
 Two Colonnade Square
 38 Colonnade Circus
 Birmingham
 B4 6BN

Development Consent Order Number
TR010054

Project Title
M54 to M6 Link Road



Development Consent Order Drawing Number
TR010054/APP/2.5

Drawing Title
**GENERAL ARRANGEMENT
 REGULATION 5(2)(O)
 SHEET 7 OF 10**

Designed	Drawn	Checked	Approved	Date
MW	MW	AM	RR	21/01/20

Internal Project No.
60536736

Scale @ A1
1:2500H/1:2500V

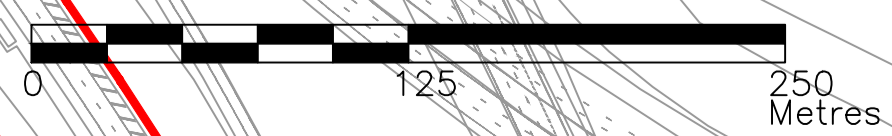
Suitability
S8

Zone
Highways General

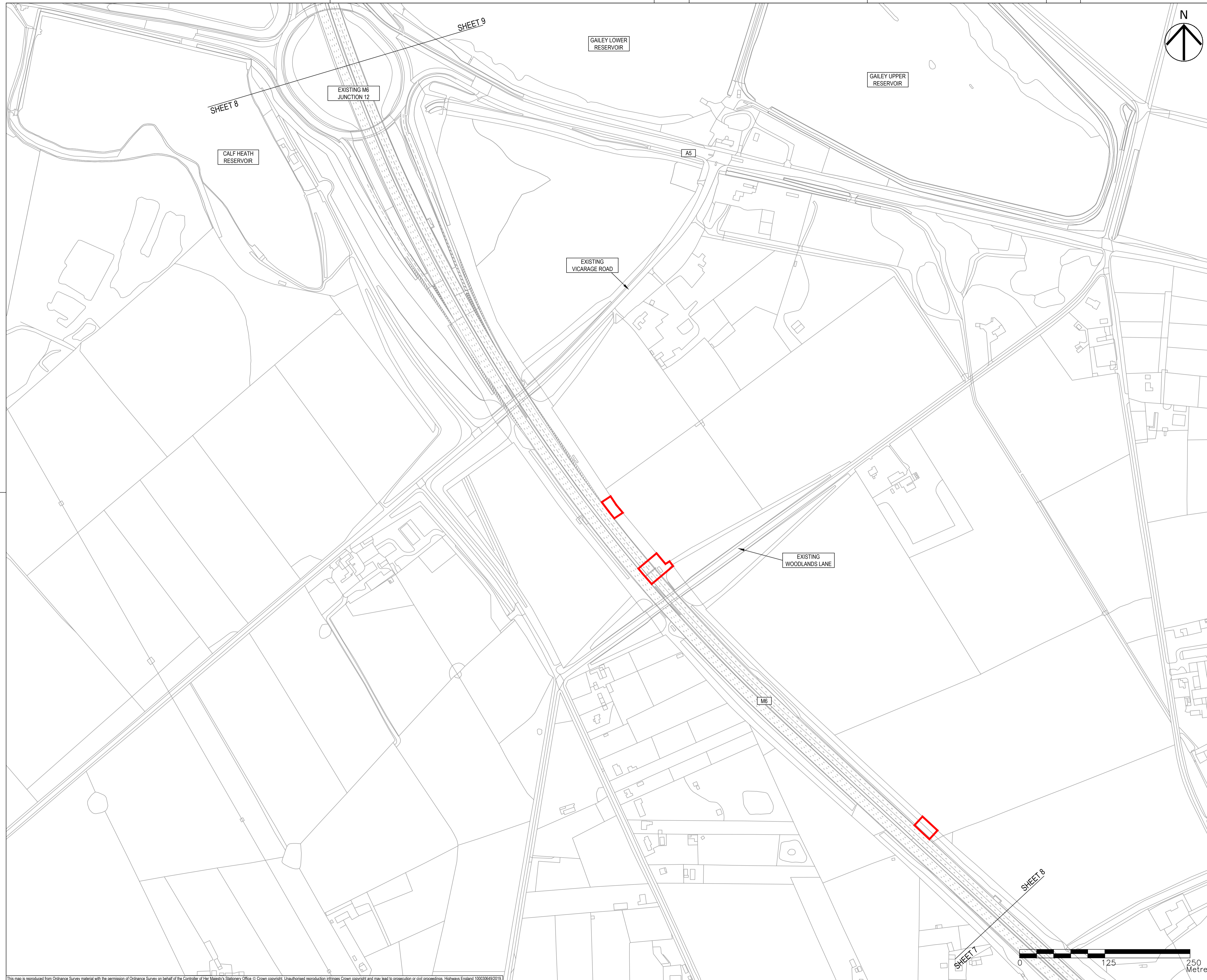
THIS DOCUMENT HAS BEEN PREPARED PURSUANT TO AND SUBJECT TO THE TERMS OF AECOM'S APPOINTMENT BY ITS CLIENT. AECOM ACCEPTS NO LIABILITY FOR ANY USE OF THIS DOCUMENT OTHER THAN BY ITS ORIGINAL CLIENT OR FOLLOWING AECOM'S EXPRESS AGREEMENT TO SUCH USE, AND ONLY FOR THE PURPOSES FOR WHICH IT WAS PREPARED AND PROVIDED.

Drawing Number	Highways England PIN	I Originator	I Volume	Rev
HE514465	-ACM	-HGN-		P08
Z3 SW_PR_Z		-DR-CH-1007		

Location I Type I Role I Number



This map is reproduced from Ordnance Survey material with the permission of Ordnance Survey on behalf of the Controller of Her Majesty's Stationery Office. © Crown copyright. Unauthorised reproduction infringes Crown copyright and may lead to prosecution or civil proceedings. Highways England 100030649/2019



- NOTES**
- THIS DRAWING IS TO BE READ IN CONJUNCTION WITH ALL OTHER RELEVANT DOCUMENTATION.
 - DO NOT SCALE FROM THIS DRAWING, USE ONLY PRINTED DIMENSIONS.
 - ALL DIMENSIONS IN MILLIMETRES. ALL CHAINAGES, LEVELS AND COORDINATES ARE IN METRES UNLESS DEFINED OTHERWISE.
 - THIS DRAWING IS TO BE READ IN CONJUNCTION WITH THE PROJECT HEALTH & SAFETY FILE FOR ANY IDENTIFIED POTENTIAL RISKS.
- KEY**
- LIMITS OF LAND TO BE ACQUIRED OR USED PERMANENTLY OR TEMPORARILY (THE ORDER LIMITS)
 - LAND NOT INCLUDED WITHIN THE ORDER LIMITS
 - RETAINING WALLS
 - NON-MOTORIZED USER ROUTE (PLEASE REFER TO STREETS, RIGHTS OF WAY AND ACCESS PLANS [TR010054/APP/2.7] FOR MORE INFORMATION)

Revision Details	By	Date	Suffix
First Issue in Draft	MW	21/12/18	P01
No significant changes noted from previous revision	JD	22/02/19	P02
No significant changes noted from previous revision	MW	29/03/19	P03
Road Markings and Hatching Added.	JP	14/05/19	P04
No significant changes noted from previous revision	HS	15/08/19	P05
Refer to Design Change Tracker for details	JP	30/10/19	P06
Background colour added	JP	17/12/19	P07
Minor amendments.	MW	21/01/20	P08

DCO APPLICATION

Client
Highways England
 Floor 5
 Two Colonnade Square
 38 Colonnade Circus
 Birmingham
 B4 6BN

Development Consent Order Number
TR010054

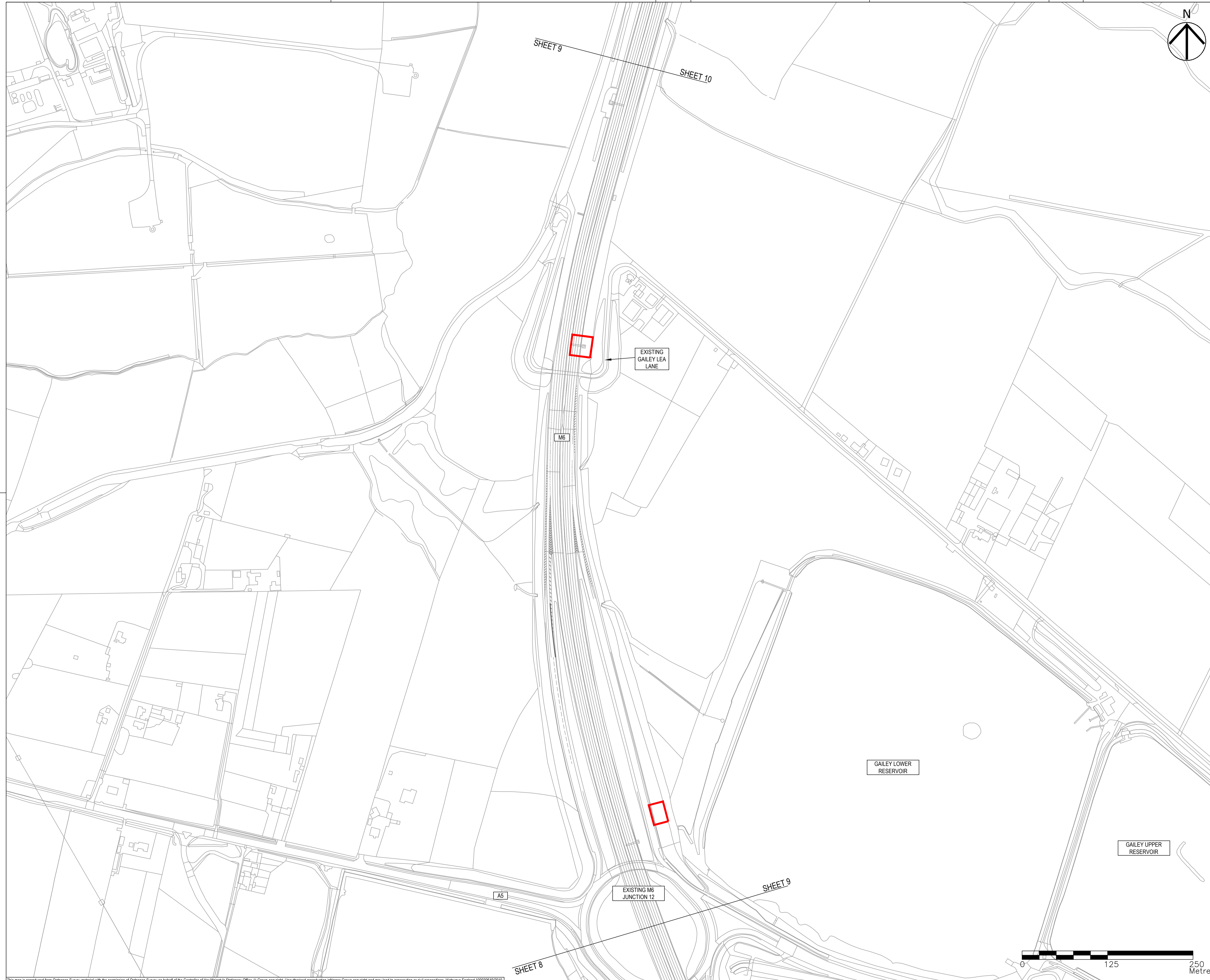
Project Title
M54 to M6 Link Road

Development Consent Order Drawing Number
TR010054/APP/2.5

Drawing Title
**GENERAL ARRANGEMENT
 REGULATION 5(2)(O)
 SHEET 8 OF 10**

Designed	Drawn	Checked	Approved	Date
---	MW	AM	RR	21/01/20
Internal Project No. 60536736	Suitability S8	Zone Highways General	THIS DOCUMENT HAS BEEN PREPARED PURSUANT TO AND SUBJECT TO THE TERMS OF AECOM'S APPOINTMENT BY ITS CLIENT. AECOM ACCEPTS NO LIABILITY FOR ANY USE OF THIS DOCUMENT OTHER THAN BY ITS ORIGINAL CLIENT OR FOLLOWING AECOM'S EXPRESS AGREEMENT TO SUCH USE, AND ONLY FOR THE PURPOSES FOR WHICH IT WAS PREPARED AND PROVIDED.	
Scale @ A1 1:2500H/1:2500V	Highways England PIN HE514465	Originator -ACM	Volume -HGN-	Rev P08
	Location Z3 SW_PR_Z	I Type -DR-CH-	I Role 1008	I Number

This map is reproduced from Ordnance Survey material with the permission of Ordnance Survey on behalf of the Controller of Her Majesty's Stationery Office. Unauthorised reproduction infringes Crown copyright and may lead to prosecution or civil proceedings. Highways England 100030649/2019



- NOTES**
- THIS DRAWING IS TO BE READ IN CONJUNCTION WITH ALL OTHER RELEVANT DOCUMENTATION.
 - DO NOT SCALE FROM THIS DRAWING, USE ONLY PRINTED DIMENSIONS.
 - ALL DIMENSIONS IN MILLIMETRES. ALL CHAINAGES, LEVELS AND COORDINATES ARE IN METRES UNLESS DEFINED OTHERWISE.
 - THIS DRAWING IS TO BE READ IN CONJUNCTION WITH THE PROJECT HEALTH & SAFETY FILE FOR ANY IDENTIFIED POTENTIAL RISKS.

- KEY**
- LIMITS OF LAND TO BE ACQUIRED OR USED PERMANENTLY OR TEMPORARILY (THE ORDER LIMITS)
 - LAND NOT INCLUDED WITHIN THE ORDER LIMITS
 - RETAINING WALLS
 - NON-MOTORISED USER ROUTE (PLEASE REFER TO STREETS, RIGHTS OF WAY AND ACCESS PLANS [TR010054/APP2.7] FOR MORE INFORMATION)

Revision Details	By	Date	Suffix
First Issue in Draft	MW	21/12/18	P01
No significant changes noted from previous revision	JD	22/02/19	P02
No significant changes noted from previous revision	MW	29/03/19	P03
No significant changes noted from previous revision	JP	14/05/19	P04
No significant changes noted from previous revision	HS	15/08/19	P05
Refer to Design Change Tracker for details	JP	30/10/19	P06
Background colour added	JP	17/12/19	P07
Minor amendments.	MW	21/01/20	P08

DCO APPLICATION

Client
Highways England
 Floor 5
 Two Colonnade Square
 38 Colonnade Circus
 Birmingham
 B4 6BN



Development Consent Order Number
TR010054

Project Title
M54 to M6 Link Road

Development Consent Order Drawing Number
TR010054/APP/2.5

Drawing Title
**GENERAL ARRANGEMENT
 REGULATION 5(2)(O)
 SHEET 9 OF 10**

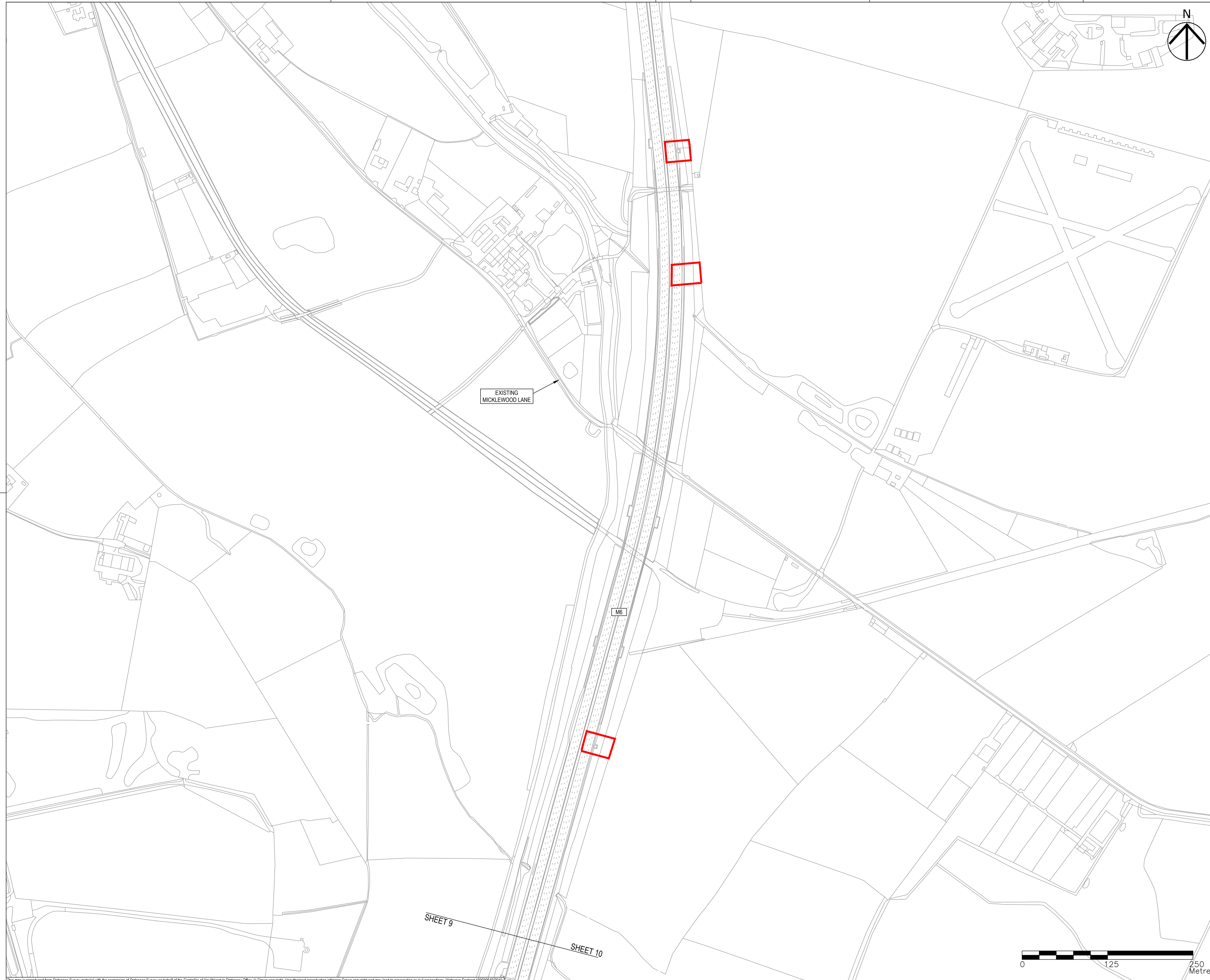
Designed	Drawn	Checked	Approved	Date
MW	MW	AM	RR	21/01/20

Internal Project No. 60536736
 Suitability S8
 Scale @ A1 1:2500H/1:2500V
 Zone Highways General

THIS DOCUMENT HAS BEEN PREPARED PURSUANT TO AND SUBJECT TO THE TERMS OF AECOM'S APPOINTMENT BY ITS CLIENT. AECOM ACCEPTS NO LIABILITY FOR ANY USE OF THIS DOCUMENT OTHER THAN BY ITS ORIGINAL CLIENT OR FOLLOWING AECOM'S EXPRESS AGREEMENT TO SUCH USE, AND ONLY FOR THE PURPOSES FOR WHICH IT WAS PREPARED AND PROVIDED.

Drawing Number	Highways England PIN	Originator	Volume	Rev
HE514465	-ACM	-HGN-		P08
Z3 SW_PR_Z		-DR-CH-1009		

Location I Type I Role I Number



- NOTES**
- THIS DRAWING IS TO BE READ IN CONJUNCTION WITH ALL OTHER RELEVANT DOCUMENTATION.
 - DO NOT SCALE FROM THIS DRAWING, USE ONLY PRINTED DIMENSIONS.
 - ALL DIMENSIONS IN MILLIMETRES. ALL CHAINAGES, LEVELS AND COORDINATES ARE IN METRES UNLESS DEFINED OTHERWISE.
 - THIS DRAWING IS TO BE READ IN CONJUNCTION WITH THE PROJECT HEALTH & SAFETY FILE FOR ANY IDENTIFIED POTENTIAL RISKS.
- KEY**
- LIMITS OF LAND TO BE ACQUIRED OR USED PERMANENTLY OR TEMPORARILY (THE ORDER LIMITS)
 - LAND NOT INCLUDED WITHIN THE ORDER LIMITS
 - RETAINING WALLS
 - NON-MOTORISED USER ROUTE (PLEASE REFER TO STREETS, RIGHTS OF WAY AND ACCESS PLANS [TR010054/APP2.7] FOR MORE INFORMATION)

First Issue in Draft	MW	AM	21/12/18	P01
No significant changes noted from previous revision	JD	AM	22/02/19	P02
No significant changes noted from previous revision	MW	AM	29/03/19	P03
No significant changes noted from previous revision	JP	AM	14/05/19	P04
No significant changes noted from previous revision	HS	AM	15/08/19	P05
No significant changes noted from previous revision	JP	DYT	30/10/19	P06
Refer to Design Change Tracker for details	JP	RR	30/10/19	P06
Background colour added	JP	DL	17/12/19	P07
Minor amendments.	MW	RR	21/01/20	P08
	RR	RR		
Revision Details	By	Date	Check	Suffix

DCO APPLICATION

Client
Highways England
 Floor 5
 Two Colmore Square
 38 Colmore Circus
 Birmingham
 B4 6BN

Development Consent Order Number
TR010054

Project Title
M54 to M6 Link Road

Development Consent Order Drawing Number
TR010054/APP/2.5

Drawing Title
**GENERAL ARRANGEMENT
 REGULATION 5(2)(O)
 SHEET 10 OF 10**

Designed	Drawn	Checked	Approved	Date
MW	MW	AM	RR	21/01/20
Internal Project No. 60536736				Suitability S8
Scale @ A1 1:2500H/1:2500V				Zone Highways General

THIS DOCUMENT HAS BEEN PREPARED PURSUANT TO AND SUBJECT TO THE TERMS OF AECOM'S APPOINTMENT BY ITS CLIENT. AECOM ACCEPTS NO LIABILITY FOR ANY USE OF THIS DOCUMENT OTHER THAN BY ITS ORIGINAL CLIENT OR FOLLOWING AECOM'S EXPRESS AGREEMENT TO SUCH USE, AND ONLY FOR THE PURPOSES FOR WHICH IT WAS PREPARED AND PROVIDED.

Drawing Number Highways England PIN HE514465 -ACM	I Originator -HGN-	I Volume -DR-CH-1010	Rev P08
Location Z3 SW_PR_Z	I Type I	I Role I	I Number I

